



Change To New

***Cubicle* India**





“Building a good customer experience does not happen by accident, it happens by good service & good quality product.”



# Introduction

- Established in 2018 by visionary founder Suman Verma.
- Prominent player in manufacturing and service of restroom cubicles.
- Commitment to quality, innovation and customer satisfaction.
- Successful projects nationwide.



# Founder: Suman Verma

- Visionary founder driving Cubicle India's success.
- Founded with a vision to revolutionize restroom cubicle industry.
- Keen understanding of market dynamics and passion for excellence.







Combines  
technology,  
premium materials  
and innovative  
designs



Specializes in  
manufacturing  
high-quality  
restroom cubicles



Comprehensive  
range for  
commercial,  
institutional and  
public spaces



# Nature of Business



Customized  
Design Solutions



Manufacturing  
Excellence



Nationwide  
Project Execution

# Services Offered



---

# Vision

We aspire to be India's top choice for restroom solutions, driven by innovation and quality that set industry benchmarks. Our focus is on enhancing user experiences through durable and innovative solutions, ensuring we redefine standards in the sector.



# Our Brand



- Evolution into trailblazer in restroom solutions.
- Recent milestone: Launch of INDQB brand.
- Commitment to innovation, quality and customer - centric solutions.





# INDQB: Elevating Spaces with Innovative Solutions



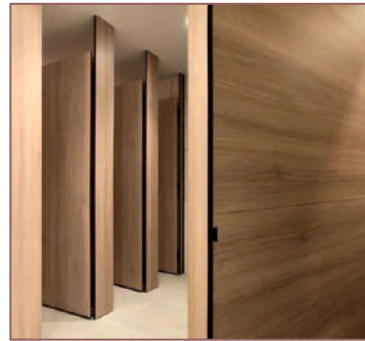
01

Modular  
Restroom  
Cubicles



02

Changing  
Room  
Partitions



03

Shower  
Cubicles



04

Urinal  
Partitions



05

PD Doors





## INDQB: Elevating Spaces with 13 Distinct Series

- Economy Series
- First Choice Series
- Ultimate Series
- Anchored Series
- Top Anchored Series
- Pipe Series
- Invisible Series
- Elegance Series
- Ceiling Hung Series
- Wall Hung Series
- Seamless Series
- INDQB KIDS Series





# Economy Series

Most budgeted Cubicles yet look beautiful.

Thickness: 12mm

Size: 1350mmx1000mm

Height: 1980mm-2000mm

Bottom Gap: 120mm-150mm

All hardware is in plastic/nylon material and section is in Aluminum Black Anodized finish .

It is most Regular Series and budget friendly.





# First Choice Series

This is the First Choice of Architect as its Durable as well reasonable.

Thickness: 12mm

Size: 1350mmx1000mm

Height: 1980mm-2000mm

Bottom Gap: 120mm-150mm

Hardware used in SS 304 Grade and all the sections in Aluminium in SS finished.







# Ultimate Series

If you want long lasting durability you can go for Ultimate Series.

Thickness: 12mm/18mm

Size: 1350mmx1000mm

Height: 1980mm-2000mm

Bottom Gap: 120mm-150mm

All hardware used in SS 304 grade  
also sections used in SS 304 grade.





# Anchored Series

To give Elegant look to your restroom cubicles here you can go with Anchored Series.

In bottom we are using solid SS 316 Plates on fixed panels.



# Ceiling Hung

Want unique look of your cubicles for your luxurious projects? Here you can go with ceiling hung model.

Thickness: 12mm/18mm

Size: 1300mmx1000mm

Height: 2400mm

Bottom Gap: 120mm-150mm

Cubicle panels directly inserted into the false ceiling and get it fixed by top rail inside the false ceiling and get covered with shoe plates.

It is a ceiling support model there is no support required in the bottom.



# Curtain Series

It's similar to Ceiling hung series.

There is gap in bottom which help to clean surface easily also its sturdy from top as heavy top rail of 100mm width of aluminium material has to be used for this model.

No support required from bottom.

Thickness: 12mm/18mm

Size: 1350mmx1000mm

Height: 1980mm-2000mm

Bottom Gap: 120mm-150mm

It's also called Wall Support.







# Elegance Series

Wow! Don't you think it's beautiful?

It's comes under full height series  
Whatever will be the height below  
12ft we can give you this series on  
your demand.

Panels inserted into ceiling from top  
and screwed with floor to the bottom.





# Invisible Series

This series is made in order to consider Indian WC or Shower cubicles, this is not visible from bottom.

Bottom panel is supported with U channel skirting





# Top Anchored Series

We have used shoe box plate on top as well as on bottom.

Height will be customize as ceiling height or as per the site condition.





# Piping series

Its designed by using SS Rod Pipe and SS clipped to give neat and clean look to the cubicles.







# PD doors

It's another option for doors at reasonable rate also no need to make granite framing sections itself is framing to fix the doors.





*Where imagination meets innovation...*



## INDQB : KIDS Series:

- Vibrant Designs
- Safety First
- Customization for Fun
- Durability and Easy Maintenance
- Age-Appropriate Facilities
- Educational Elements
- Comfort and Accessibility



# Materials Used in Cubicles

## HPL Boards

Durable, wear-resistant,  
moisture-resistant

## Phenolic Craft Papers

Melamine-treated for  
added durability



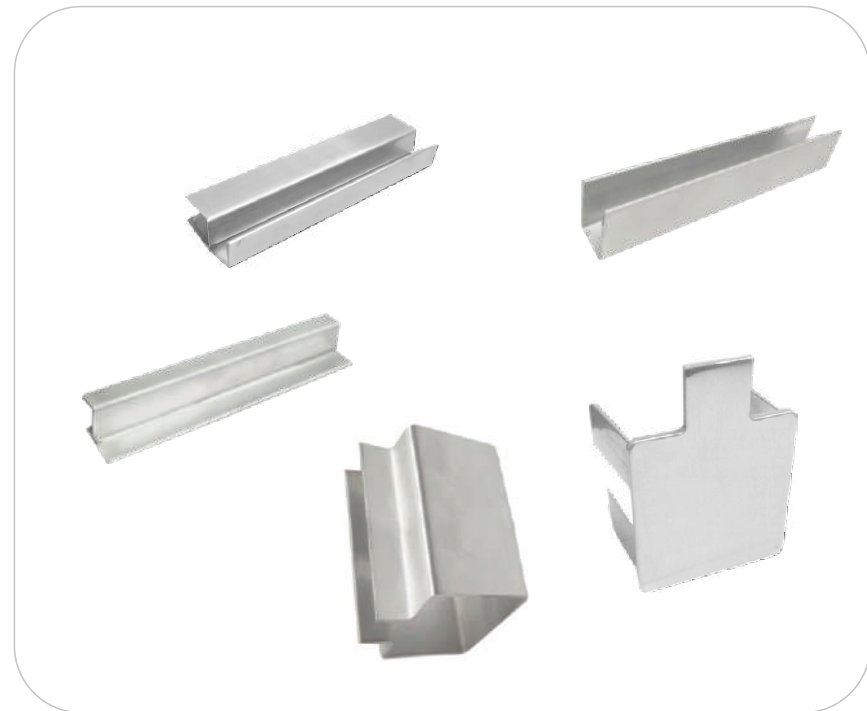
# Materials Used in Cubicles

Sections and Channels

## Aluminium



## SS 304





# Materials Used in Cubicles

## Hardware Set

### Nylon



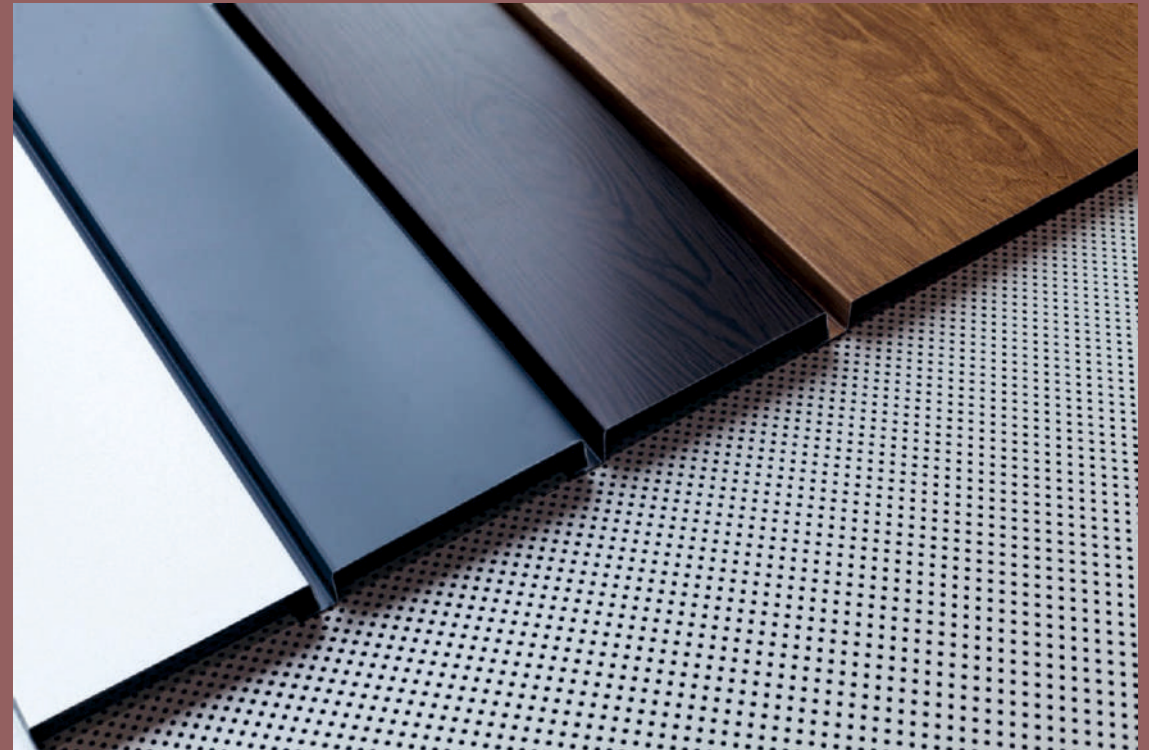
### SS 304



# Features of Materials



- Durable Construction
- Resistance to Wear and Impact
- Moisture and Chemical Resistance
- Wide Range of Colors and Designs
- Easy to Clean and Maintain
- Fire Retardant and UV Resistance
- Versatility in Applications
- Environment Friendly



# Production Facilities and Timeline



## Production Timeline

20 to 25 days



## Dual-location Setup

Chandigarh and  
Ahmedabad



## Considerations

Efficiency, Optimization,  
Inventory Management,  
Quality Assurance



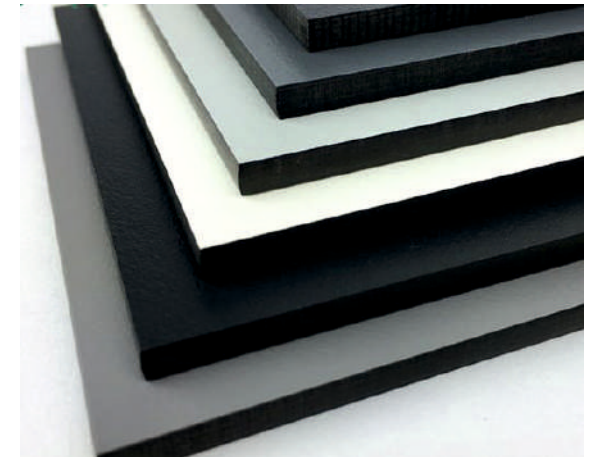
# Godown Facility in Virar East



Quick access to essential materials



Contribution to meeting urgent project requirements



Running shades and hardware storage





# Diversification into Additional Products



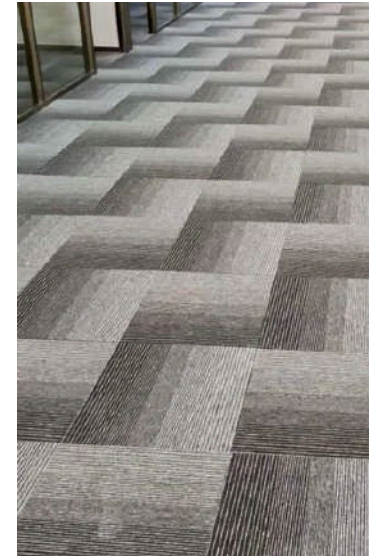
INDQB  
Office  
Workstation



INDQB  
Modular  
Ceiling



INDQB  
Flush  
Doors



INDQB  
Carpet  
Tile



INDQB  
Door  
Frames



# Why Choose Cubicle India?

- Immediate Delivery
- No False Commitments
- Quality Focus
- 10 Years Warranty
- Nationwide Service
- Skilled Labor Force
- Tested and Certified Products
- Customized Design
- After-Sales Service Anywhere
- Experienced Technicians
- Prompt Response
- Reasonable Offers





Arctic White RC 601XL



Ivory RC 855XL



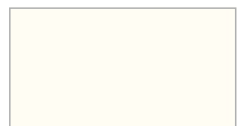
Grey RC 885XL



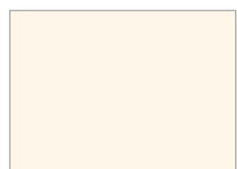
Light Grey RC 886XL



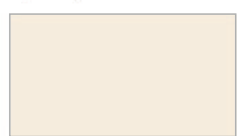
Brun Moyen RC 879XL



Egg White RC 13XL



Mysore Ivory RC 17XL



Peanut RC 859XL



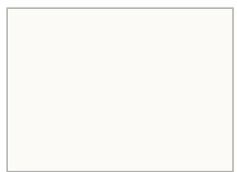
Creme Moyen RC 888XL



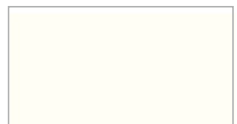
Slate Grey RC 862XL



D.Grey RC 873XL



Cold White RC 851XL



Frosty White RC 856XL



Beige(Irish Cream) RC 871XL



Grey RC 887XL



Silver Grey RC 860XL



Gothic Grey RC 861XL



Dark Grey RC 889XL



Ebony RC 720XL



Blue RC 884XL



Parrot Green RC 865XL



Burgundy RC 605XL



Black RC 11XL



D.Grey RC 801XL



Royale Blue RC 853XL



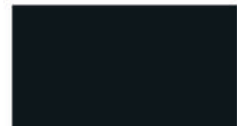
Green RC 869XL



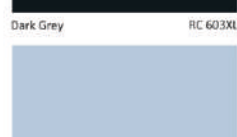
Yellow RC 15XL



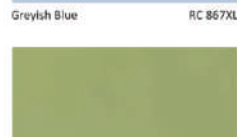
Vodafone Red RC 872XL



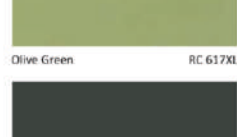
Dark Grey RC 603XL



Greylsh Blue RC 867XL



Olive Green RC 617XL



Green RC 606XL



Orange RC 857XL



Mango RC 864XL

# Solids





# Woodens







# Supplying our cubicles

## University

- Amethi University
- MM University
- SR University
- Parul University
- Vijaybhumi University
- Orchid International School
- JBCN School
- Expert School
- Euro International
- Eurokids
- Stone Chip School
- Diamond Jubilee School
- Agakhan School
- Universal School

## Banking Sector

- ICICI Bank
- HDFC Life
- IDFC Bank
- Axis Bank
- ICICI Lombard
- DHFL
- UTI Asset etc

## Automobile Sector

- Kia Motors
- Cargo Motors
- Jaguar
- Skoda
- DB Motorsports

## Corporate and other Sector

- Godrej
- Lodha Group
- L&T
- Inorbit Mall
- Nexus Mall
- Dreams Mall
- P&G
- Goa Airport
- Vishakhapatnam Airport
- Bhuj Airport
- Ahmedabad Airport
- Patna Airport
- Jabalpur Airport
- Jabalpur Airport
- Goa Airport
- Amazon
- Flipkart
- Oppo
- Dominos
- Brand Factory
- Lubi
- Marathon Futurex
- I Phone Factory





# Thanks!

## **OFFICE ADDRESS**

2nd Floor Office No 202 & 203, Global Plaza Global City, Virar West.

**Mob. : +91 8850336319**

## **GODOWN ADDRESS**

HDIL Industrial Park, Gala No 4, Building No 23, Virar East

**Mob: +91 8070453555**

**Mail : [sumanverma@cubicleindia.co.in](mailto:sumanverma@cubicleindia.co.in)**

**[sales@cubicleindia.co.in](mailto:sales@cubicleindia.co.in)**

**Website: [www.cubicleindia.co.in](http://www.cubicleindia.co.in) | [www.indqb.com](http://www.indqb.com)**

